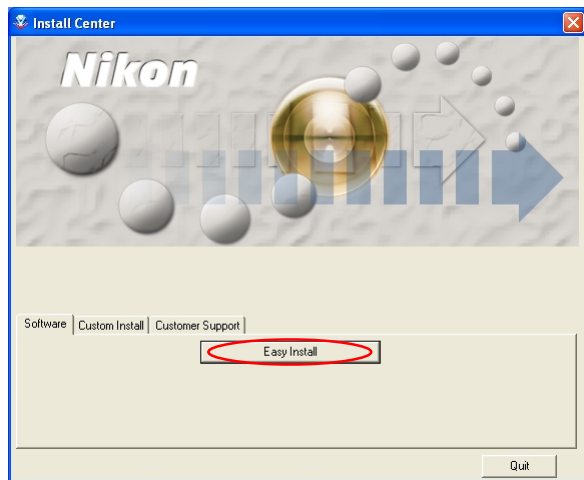


Easy Install

Step 1 : Select Easy Install



Click **Easy install** in the **Software** tab to start the installation of the PTP Driver for Coolpix series cameras^{*1}, Coolpix Camera Drivers^{*2} (all models except 990 and 880), Panorama Maker, QuickTime 5.0.2, Nikon View 5 and FotoStation Easy.

^{*1} **Windows XP only**

^{*2} **Windows 98SE only**

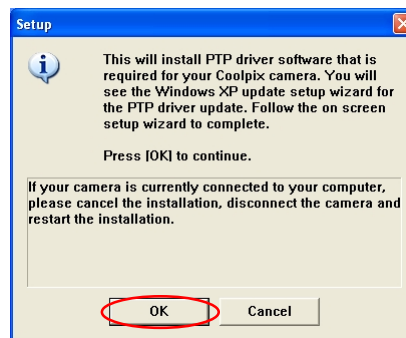
Before installation

- Before installing Nikon View 5 and the device driver, make sure the camera is disconnected from the computer. If the Device Wizard launches when you connect a camera, click **Cancel** to exit the Wizard.
- You have turned off any virus-checking software that may be running.
- You have exited all other applications.

Step 2 : Install the Software

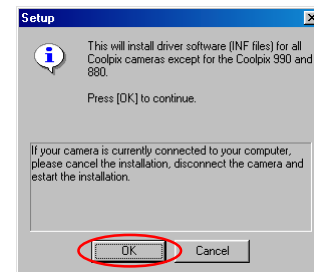
2.1 — Install device driver

If you are using Windows XP, the installation of the PTP driver will start. The **Setup** dialog box below is displayed, asking you to confirm that a camera is not connected to your computer. Make sure a camera is not connected, and click **OK** to begin installation.



Windows 98SE

If you are using Windows 98SE, the **Coolpix Camera Drivers (all models except 990 and 880)** will be installed under Easy Install. The dialog box shown right will be displayed. Click **OK** to continue.



After the PTP drivers have been installed, the Setup wizard may start automatically. Click **Next**.

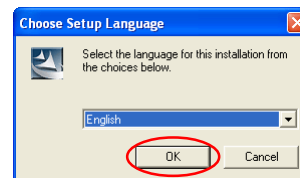


If the wizard starts, follow the instructions on the screen. When the final screen appears, click **Finish** to complete the wizard. Do not restart your computer even if instructed to do so.

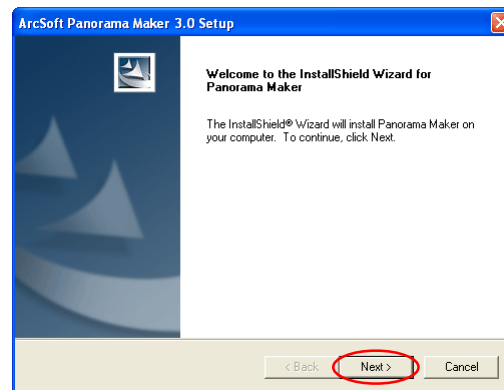


2.2 — Panorama Maker

The dialog box below, asking you to select a language for installation, may appear. Select the desired language and click **OK**.



The dialog below is displayed, showing that you are now installing PanoramaMaker. Follow the on screen instructions to continue the installation.

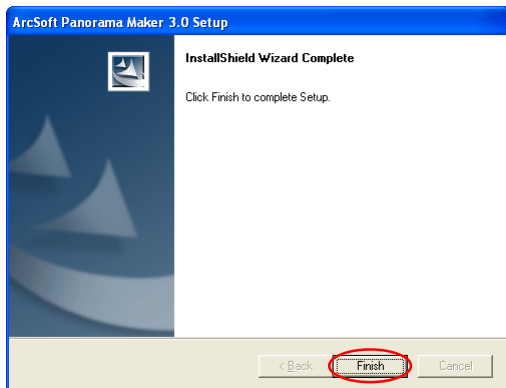


About Panorama Maker

You can use Panorama Maker to combine separate images into a Panorama. This software is particularly useful if your COOLPIX camera has a Panorama Assist mode.



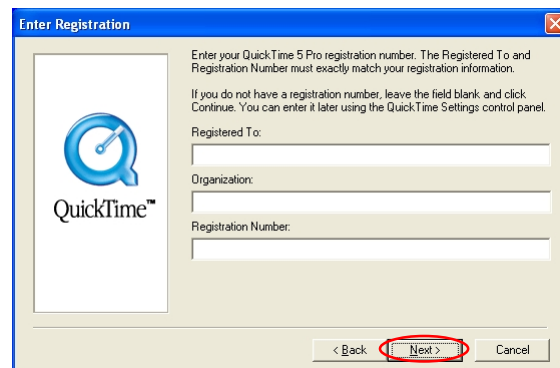
When the dialog box shown below appears, click **Finish** to complete the installation.



2.3 — Installing QuickTime 5.0.2

The **Enter Registration** dialog box (see below) appears showing that you are now installing QuickTime 5.0.2. Note that you do not enter registration information.

Click **Next** to continue. Follow the remaining on-screen instructions to complete installation and proceed to the next step.

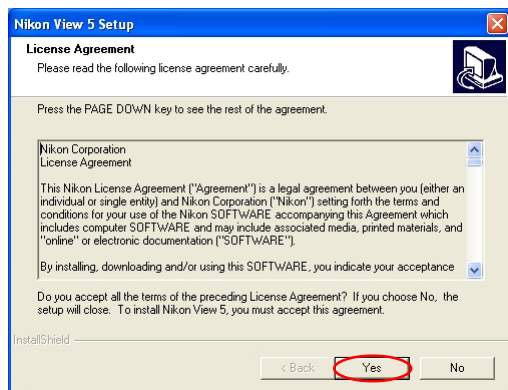


2.4 — Installing Nikon View 5

The license agreement (see below) appears showing that you are now Installing Nikon View 5.

I — Accept the license agreement

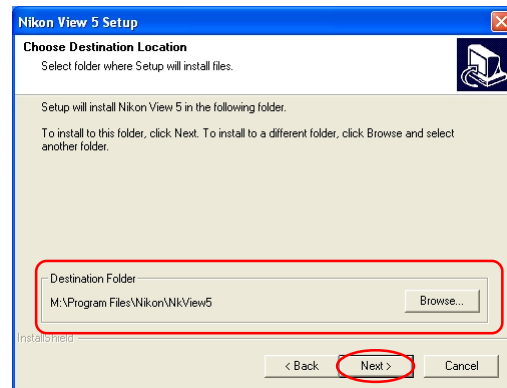
When you start installation of Nikon View 5, the license agreement is displayed. Read the agreement carefully, and click **Yes** if you wish to continue installation.



2 — Choose a location for Nikon View 5

The folder to which Nikon View 5 will be installed is shown in the **Destination Folder** area. To install to this folder, click **Next**.

To select a new folder, click the **Browse** button and navigate to the desired location.



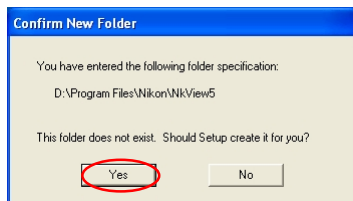
Existing versions of Nikon View

If an older version of Nikon View, or a version of Nikon Capture 1.x is installed on your computer, it must be uninstalled before installing Nikon View 5.



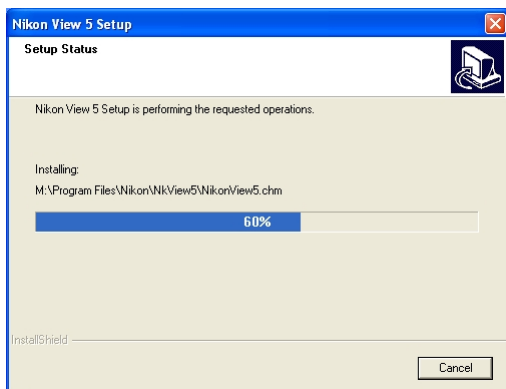
3 — Confirm New Folder

If the folder destination folder specified in the previous step has not yet been created, you will be asked whether you want to create the folder. Click **Yes** to create the folder automatically and proceed to the next step.



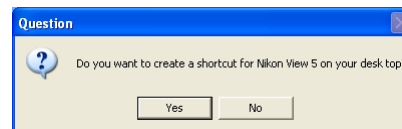
4 — Start installation

While installation is in progress, the dialog shown below will be displayed.



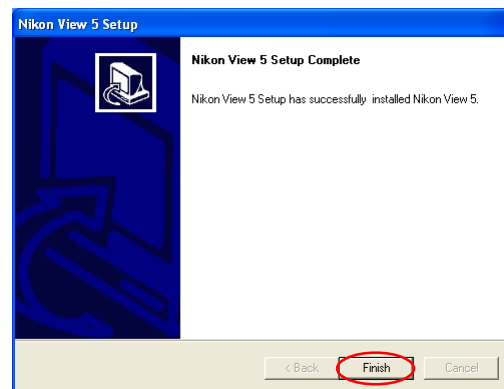
5 — Create a shortcut icon

When the progress indicator reaches 100%, the dialog shown below appears. Click **Yes** to create a shortcut, allowing you to start Nikon View 5 directly from an icon on the desktop. If you do not want to create a shortcut, click **No**.



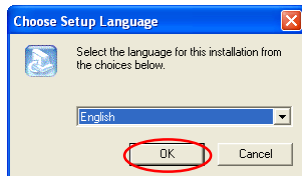
6 — Complete the installation

A dialog box appears indicating that installation of Nikon View 5 is complete. Click **Finish**.

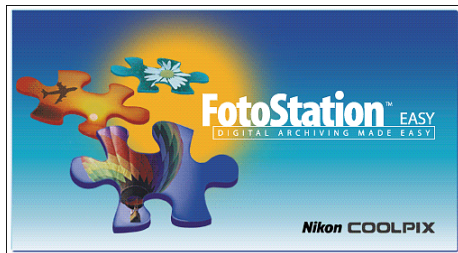


2.5 — FotoStation Easy

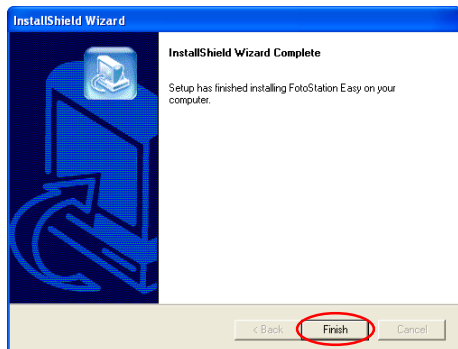
The dialog box below, asking you to select a language for installation, appears. Select the desired language and click **OK**.



The FotoStation splashscreen shown below appears, followed by a dialog box asking you to select the installation destination. Follow the on-screen instructions to continue the installation.



When the dialog box shown below appears, click **Finish** to complete the installation.



2.6 — Restart your computer

The dialog box shown below appears. Select **Yes** to restart your computer. The Easy Install procedure is now complete.

